



CYNGOR BWRDEISTREF SIROL
RHONDDA CYNON TAF
COUNTY BOROUGH COUNCIL

COMMITTEE SUMMONS

C Hanagan
Service Director of Democratic Services & Communication
Rhondda Cynon Taf County Borough Council
The Pavilions
Cambrian Park
Clydach Vale, CF40 2XX

Meeting Contact: Hannah Jones - Council Business Unit (07385401954)

YOU ARE SUMMONED to a **virtual** meeting of **CLIMATE CHANGE CABINET SUB COMMITTEE** to be held on **WEDNESDAY, 27TH SEPTEMBER, 2023** at **2.00 PM**.

Non Committee Members and Members of the public may request the facility to address the Committee at their meetings on the business listed although facilitation of this request is at the discretion of the Chair. It is kindly asked that such notification is made to Democratic Services by Monday, 25 September 2023 on the contact details listed above, including stipulating whether the address will be in Welsh or English.

AGENDA

**Page
No's**

1. DECLARATION OF INTEREST

To receive disclosures of personal interest from Members in accordance with the Code of Conduct.

Note:

1. Members are requested to identify the item number and subject matter that their interest relates to and signify the nature of the personal interest; and
2. Where Members withdraw from a meeting as a consequence of the disclosure of a prejudicial interest they **must** notify the Chairman when they leave.

2. MINUTES

To approve as an accurate record, the minutes of the meeting of the Climate Change Cabinet Sub-Committee held on 23rd March 2023.

5 - 8

3. CLIMATE CHANGE CABINET SUB COMMITTEE WORK PROGRAMME 2023-2024 MUNICIPAL YEAR

To receive the report of the Service Director of Democratic Services and Communication, which sets out the proposed list of matters requiring consideration by the Climate Change Cabinet Sub-Committee during the 2023-24 Municipal Year.

9 - 16

4. 'THINK CLIMATE RCT' THE COUNCIL'S TACKLING CLIMATE CHANGE STRATEGY 2022-2025

To receive the report of the Chief Executive, which provides Members with a first quarter position statement as part of an overview of the progress in delivering the Council's Climate Change Strategy '[Think Climate RCT](#)' agreed in June 2022.

17 - 24

5. 'NATURE ON YOUR DOORSTEP': UPDATE ON THE IMPLEMENTATION OF THE LIVING LANDSCAPE PROJECT IN RHONDDA CYNON TAF

To receive the report of the Director of Prosperity and Development, which seeks to update Members on Local Places for Nature grant funded works undertaken in 22/23 and planned for 23/24 and 24/25.

25 - 50

6. URGENT BUSINESS

To consider any items which the Chair by reason of special circumstances is of the opinion should be considered at the meeting as a matter of urgency.

Service Director of Democratic Services & Communication

Circulation:-

County Borough Councillors:

Councillor C Leyshon, A Crimmings, Councillor R Lewis, Councillor M Norris and
Councillor W Owen

This page is intentionally left blank



RHONDDA CYNON TAF

**RHONDDA CYNON TAF COUNCIL
CLIMATE CHANGE CABINET SUB COMMITTEE**

Minutes of the virtual meeting of the Climate Change Cabinet Sub Committee held on Thursday, 23 March 2023 at 1.00 pm.

This meeting was recorded, details of which can be accessed [here](#)

County Borough Councillors – The following Councillors were present:

Councillor C Leyshon (Chair)

Councillor A Crimmings Councillor R Lewis

Officers in attendance

Mr C Hanagan, Service Director of Democratic Services & Communication

Mr D Powell, Director of Corporate Estates

Ms L Lawson, Performance Manager

Mr A Roberts, Head of Energy and Carbon Reduction

Mr C Davies, Corporate Policy & Consultation Manager

Mr L Marengi, Performance and Strategic Climate Change Officer

Apologies for absence

Councillor M Norris Councillor J Barton

19 Declaration of Interest

In accordance with the Council's Code of Conduct, there were no declarations made pertaining to the agenda.

20 Minutes

It was **RESOLVED** to approve the minutes of the meeting held on 6th December 2022 as an accurate reflection.

21 RCT Climate Change Engagement Plan (2023-2025)

The Corporate Policy and Consultation Manager provided the Sub-Committee with the Climate Change Engagement Plan, which outlined how the Council proposed to communicate and involve stakeholders in developing its approach to working together to achieve its climate targets.

The plan set out how the Council intends to engage with residents, schools, businesses, staff and the third sector on considering greener and more sustainable lifestyle choices whilst raising the profile and increasing awareness about climate change.

The Chair took the opportunity to thank the officer and colleagues for the work undertaken to produce the robust Engagement Plan before Members. The Chair

was encouraged to note the RCT Climate Change Engagement Plan would seek to engage with residents, schools, businesses, staff and the third sector and cover the wider community and individuals.

The Chair highlighted the importance of the Council staff, 80% of which live within the County Borough, and commended them for contributing to the ambitious climate targets outlined within the report.

The Cabinet Member for Environment & Leisure echoed the Chair's comments and thanked the officer for the excellent report. The Cabinet Member emphasised the importance of engaging with young people and was of the view that their enthusiasm would be key in helping the Council meet its target. The Cabinet Member stated that she was encouraged by the thorough plan, which would see all areas of the Local Authority working together.

The Cabinet Member for Education, Youth Participation & Welsh Language praised the meaningful involvement from RCT staff and was pleased to see that their comments and suggestions had been taken on board. The Cabinet Member was of the view that the Council should further seek to influence other public sector bodies that operate within the County Borough to contribute to the wider decarbonisation of RCT.

The Director of Corporate Estates advised the Cabinet Member that collaborative work with other organisations within RCT was already taking place. The Director advised that work was underway with both the Local Health Board and Transport for Wales.

The Climate Change Cabinet Sub-Committee **RESOLVED:**

1. To consider the information contained in the report and the proposed engagement approach;
2. To approve the approach outlined; and
3. To develop the approach going forward and deliver on the communications and engagement activity, there is a need for existing staff support, initially provided by the named responsible officers, working in partnership with key environmental stakeholders.

22 Corporate Decarbonisation Strategy and Action Plan

The Head of Energy and Carbon Reduction provided Members of the Sub-Committee with the draft Corporate 'Decarbonisation Strategy' and embedded 'Action Plan', the aim of which was to provide a clear pathway, with defined timescales, to assist the Council in delivering upon its target of achieving Carbon Neutral status by 2030.

The Chair thanked the officer for the comprehensive report. The Chair spoke of the ambitious targets and emphasised the huge scale of the Council's operations, explaining that there were 359 sites, 600+ fleet vehicles, 10,829 full time members of staff and 423KM² of land covered.

The Chair praised the idea of zoning patches of social care and commented that the need for a vehicle can limit the number of carers employed by the Council. The Chair was also pleased to note that a future initiative would be to consider healthier meals options across schools, care homes and offices.

The Cabinet Member for Education, Youth Participation & Welsh Language took the opportunity to thank officers for the considerable amount of work undertaken to produce the fit for purpose and user-friendly Action Plan before Members. The Cabinet Member commented that the ambitious Plan would be useful for residents and Members to track the decarbonisation progress.

The Climate Change Cabinet Sub-Committee **RESOLVED:**

1. To note and comment upon the contents of the report and the Council's draft Decarbonisation Strategy and Action Plan;
2. To consider the draft Decarbonisation Strategy and Action Plan as providing the pathway for the Council to:
 - a) Meet its stated carbon reduction targets as published in the Council's Climate Change Strategy 2022-2025
 - b) Contribute in response to the nationally declared climate and nature emergencies.
3. To maintain and prioritise the Decarbonisation debate, to increase and/or vary the speed and scope of the Council's Decarbonisation work, and to recognise the need for all stakeholders to work together to make a positive difference; and
4. To receive regular updates on progress and to amend the action plan as appropriate to ensure we remain on target to meet our ambitions.

23 Hydro Electric Generation in RCT

The Director of Corporate Estates provided the Sub-Committee with an overview of an updated viability report, completed by a specialist company, for the development of small-scale hydroelectric power schemes within the boundaries of the County Borough of Rhondda Cynon Taf. The historical, wide-ranging, report had recently been the subject of an internal review.

The Chair took the opportunity to thank officers and graduates, who were now full-time employees of the Council, for identifying the potential small-scale hydropower schemes across Rhondda Cynon Taf. The Chair was excited by the prospect of the three successful sites, which had been recommended to take forward into a full feasibility study and voiced her support.

The Cabinet Member for Education, Youth Participation & Welsh Language echoed the Chair's comments and was pleased to note that following a review requested by Elected Members, hydro-generation was back on the Council's energy generation agenda. The Cabinet Member spoke of the huge potential for hydro electric generation within RCT due to the weather and topography and commented that he would look forward to future updates.

The Cabinet Member kindly requested that officers liaise with all Local Members in respect of any successful schemes, which would further promote the Council's decarbonisation activities within local communities.

The Climate Change Cabinet Sub-Committee **RESOLVED:**

1. To note the contents of the report as part of the works agenda of

- the Climate Change Cabinet Sub-Committee;
2. To agree further expenditure in the development of the proposals, as detailed in sections 6 and 11, to undertake further survey works and feasibility studies, to assess full potential and develop further project proposals; and
 3. To receive further periodic updates on the progress of the proposals, either collectively, or on a 'case by case' basis.

24 Proposed Solar Farm

The Head of Energy and Carbon Reduction provided the Climate Change Cabinet Sub-Committee with a further update with regards to the work underway in the development of a 'Land Based Solar Farm', to be located on Council owned land located at Coed Ely, on an 84-acre 'terraced' former colliery site, near Tonyrefail. The facility will, when constructed, be an asset owned by Rhondda Cynon Taf County Borough Council.

The Chair thanked the officer for the information. The Chair was pleased with the progress of the proposed solar farm and highlighted that the project would 'offset' around 55,000 tonnes of Carbon over the expected 35yr 'minimum' lifecycle of the project.

The Cabinet Member for Environment & Leisure commented that the report was yet another exciting project and commended officers for their work. The Cabinet Member felt that such schemes identified by the Council would be an important talking point for school children and key for their futures.

The Climate Change Cabinet Sub-Committee **RESOLVED:**

1. To note the content of the report as part of the ongoing work in response to our climate change ambitions and agree to the further progress of the project proposals, in line with the content of the report; and
2. To receive further report(s) to provide updates on progress as/when deemed appropriate.

This meeting closed at 1.40 pm

**Councillor C Leyshon
Chair.**

Mae'r ddogfen hon ar gael yn Gymraeg / This document is also available in Welsh

RHONDDA CYNON TAF COUNTY BOROUGH COUNCIL

CLIMATE CHANGE CABINET SUB COMMITTEE

27TH SEPTEMBER 2023

CLIMATE CHANGE CABINET SUB-COMMITTEE WORK PROGRAMME 2023-2024 MUNICIPAL YEAR.

REPORT OF THE SERVICE DIRECTOR, DEMOCRATIC SERVICES & COMMUNICATION IN DISCUSSION WITH THE RELEVANT CABINET MEMBER, COUNCILLOR C LEYSHON

Author: Hannah Jones, Council Business Unit

1. PURPOSE OF THE REPORT

- 1.1 To comment and approve the proposed list of matters requiring consideration by the Climate Change Cabinet Sub-Committee during the 2023-24 Municipal Year.

2. RECOMMENDATIONS

It is recommended that the Climate Change Cabinet Sub-Committee:

- 2.1 Subject to any amendments, approve the Climate Change Cabinet Sub-Committee Work Programme for the 2023-2024 Municipal Year, as attached as Appendix 1;
- 2.2 Agree to undertake site visits during the Municipal Year to the proposed list of locations:
 - Launch of School Eco Awards;
 - Ysgol Gynradd Gymraeg Awel Taf, Rhydyfelin;
 - [Soaring Supersaurus](#), Penrhys;
 - Canolfan Calon Taf; and
 - Welcome to our Woods – [Crop Cycle](#)
- 2.3 Subject to the agreement of 2.2, receive a future report of the Chair with the findings from each of the site visits.

3. REASONS FOR RECOMMENDATIONS

- 3.1 To ensure that progress of the Council's Tackling Climate Change Strategy and Action Plan is monitored to respond to the Cabinet's commitment for the Council to become Carbon Neutral by 2030, and to work with residents and businesses within the Borough to ensure the whole County Borough is Carbon Neutral as close as possible to the 2030 target.

4. BACKGROUND

- 4.1 The formerly named Climate Change Cabinet Steering Group was established to ensure an Authority-wide approach to issues of climate change and the Council becoming a carbon neutral organisation by 2030.
- 4.2 This Cabinet Steering Group provided the opportunity to proactively discuss progress and delivery of actions, which emanate from the Corporate Plan, which aims to meet climate change challenges and reduce the Council's carbon footprint.
- 4.3 At the Council's twenty-seventh Annual General Meeting held on 25th May 2022, the Leader announced his [Scheme of Delegation](#) for the 2022-2023 Municipal Year, whereby a number of changes were made to the Climate Change Steering Group.
- 4.4 With climate priorities now embedded across the work of the Council, continuous engagement with the third sector and our local communities and Strategies and Action Planning in place, it was agreed that the former Steering Group would function as a Climate Change Cabinet Sub-Committee and as such, the membership was revised to include Cabinet Member representation with voting rights to determine a matter.
- 4.5 The work programme is a rolling document for the 2023 - 2024 Municipal Year, to allow for regular updates and amendments. The work programme is attached as Appendix 1 to this report.
- 4.6 During the period outlined, the work programme may be subject to further change to consider business needs.

5. PROPOSED BUSINESS

- 5.1 It is proposed that the Climate Change Cabinet Sub-Committee formally meet on three occasions during the 2023-2024 Municipal Year. Further meetings can be convened at the request of the Chair.
- 5.2 In addition to the formal meetings of the Sub-Committee, it is proposed that Members undertake site visits during the Municipal Year to appropriate locations, such as schools, community projects and businesses throughout the County Borough to gain further insight into the work undertaken to meet the Council and County Borough climate targets.
- 5.3 The following events/locations have been proposed for Member consideration:
- Launch of School Eco Awards;
 - Ysgol Gynradd Gymraeg Awel Taf, Rhydyfelin;
 - [Soaring Supersaurus](#), Penrhys;
 - Canolfan Calon Taf; and

- Welcome to our Woods – [Crop Cycle](#)

6. CONSULTATION / INVOLVEMENT

- 6.1 The work programme has been compiled by members of the Senior Leadership Team in discussion with the Chair of the Climate Change Cabinet Sub-Committee.

7. EQUALITY AND DIVERSITY IMPLICATIONS / SOCIO-ECONOMIC DUTY

- 7.1 An Equality Impact Assessment is not needed because the contents of the report are for information purposes only.

8. WELSH LANGUAGE IMPLICATIONS

- 8.1 A Welsh Language Impact Assessment is not needed because the contents of this report are for information purposes only.

9. FINANCIAL IMPLICATIONS

- 9.1 There are no financial implications aligned to this report. Any investment required to address any of the recommendations will be reported and considered separately.

10. LEGAL IMPLICATIONS OR LEGISLATION CONSIDERED

- 10.1 There are no legal implications aligned to this report.

11. LINKS TO THE COUNCILS CORPORATE PLAN / OTHER CORPORATE PRIORITIES.

- 11.1 The Council's approach to the Well-being of Future Generations Act is to embed its requirements into the Council's business including its Climate Commitments. As such, all reports arising from the Sub-Committee's Work Programme will incorporate the national goals, together with the five Ways of Working to deliver the Council's Climate Commitments.

12. CONCLUSION

- 12.1 The work of the Climate Change Cabinet Sub-Committee seeks to enable the Council to achieve the 2030 target.

LOCAL GOVERNMENT ACT 1972

AS AMENDED BY

THE LOCAL GOVERNMENT (ACCESS TO INFORMATION) ACT 1985

RHONDDA CYNON TAF COUNTY BOROUGH COUNCIL

CLIMATE CHANGE CABINET SUB-COMMITTEE

27TH SEPTEMBER 2023

**REPORT OF THE SERVICE DIRECTOR, DEMOCRATIC SERVICES &
COMMUNICATION**



Climate Change Cabinet Sub-Committee Work Programme

Forward plan of proposed Climate Change Sub-Committee business for the 2023-2024 Municipal Year

Specific Period: September 2023 – May 2024.

Meetings of the Climate Change Cabinet Sub-Committee will be convened by the Chair when necessary.

Contact: Hannah Jones – Council Business Unit

DATE	REPORT TITLE	RESPONSIBLE OFFICER	OPEN / EXEMPT
SEPTEMBER 2023	Forward Work Programme	Service Director of Democratic Services and Communication	Open
	‘Nature on Your Doorstep’: Update on the implementation of the Living Landscape project in Rhondda Cynon Taf	Director of Prosperity and Development	Open
	Q1 Performance Cabinet Report – Climate Change Specifics	Performance Manager	Open
DECEMBER 2023	Carbon Footprint	Director of Corporate Estates	Open
	Schools Eco Award	Service Director 21st Century Schools and Transformation	Open
	Solar Farm Update	Director of Corporate Estates	Open
	EV Charging Strategy Addendum	Director of Corporate Estates	Open
	Corporate Plan Engagement	Performance Manager	Open

MARCH 2024	Procured Goods & Services	Head of Procurement	Open
	Energy Generation Projects	Director of Corporate Estates	Open
	Costed Carbon Reduction Plan	Director of Corporate Estates	Open
	Climate Change Cabinet Sub-Committee Site Visits	Chair of the Climate Change Cabinet Sub-Committee	Open
	Climate Change Cabinet Sub-Committee Annual Report	Service Director of Democratic Services and Communication	Open
	Sustainable Food	To be confirmed	Open

This page is intentionally left blank



RHONDDA CYNON TAF COUNTY BOROUGH COUNCIL

CLIMATE CHANGE CABINET SUB COMMITTEE

27 SEPTEMBER 2023

'THINK CLIMATE RCT' THE COUNCIL'S TACKLING CLIMATE CHANGE STRATEGY 2022-2025

REPORT OF THE CHIEF EXECUTIVE IN DISCUSSION WITH CLLR CHRISTINA LEYSHON, CABINET MEMBER FOR CORPORATE SERVICES AND CLIMATE CHANGE

AUTHOR: Lesley Lawson, Performance Manager

1. PURPOSE OF REPORT

- 1.1 To provide to Members a first quarter position statement as part of an overview of our progress in delivering the Council's Climate Change Strategy, ['Think Climate RCT'](#) agreed in June 2022.

2. RECOMMENDATIONS

It is recommended that the Cabinet Sub Committee.

- 2.1 Considers the information contained within the report.
- 2.2 Takes a view on the potential areas for further consideration as part of the Sub Committee's Work Programme.
- 2.3 Notes the potential to further embed the Council's response to Climate Change into the business of the Council as part of the development of the Council's new Corporate Plan.

3 REASONS FOR RECOMMENDATIONS

- 3.1 To assist the Council to meet its 2030 Carbon Neutral targets.

for RCT to be a carbon neutral Council,
for the whole County Borough is as close as possible to carbon neutral and
to contribute to the Welsh Government's ambition of a Net Zero public sector.

- 3.2 To support the implementation and delivery of the Council's wider Tackling Climate Change Strategy ['Think Climate RCT'](#) and associated strategies/plans.

4 BACKGROUND

- 4.1 In recent years there have been growing global, UK wide and national drives to reduce carbon emissions, keep global warming below 1.5%, protect nature and the environment and adapt to the current and projected changes in the climate and more frequent extreme weather events.
- 4.2 In 2019, Welsh Government declared a Climate Emergency and set out its approach in its strategy [Prosperity for All: A low Carbon Wales](#). Since then, the Welsh Government has put in place many and varied plans, strategies, targets, milestones, ambitions and deadlines for public bodies to meet. The latest UK Climate Change Committee's [Progress Report on Reducing emissions in Wales](#), published in June, indicated that *'while the First Carbon Budget (2016-2020) has been achieved, Wales is not yet on track to meet its targets for the second half of this decade and beyond'*. The report set out 58 recommendations across a number of areas, which are currently under consideration by the Minister.
- 4.3 More locally, whilst the Council had progressed energy saving and other carbon reduction projects, it also recognised the speed, complexity, interconnections and differing geographic and sectoral boundaries surrounding the response to tackling climate change across all the services we provide, purchase or commission.
- 4.4 In June 2022, following engagement with residents, staff and other stakeholders given the Covid restrictions in place at the time, Cabinet agreed the Council's Tackling Climate Change Strategy: [Think Climate RCT](#). 'Think Climate RCT' currently provides a structure and framework for our plans to decarbonise the Council and the County Borough. Also, by mirroring the Council's current Corporate Plan in its commitments in respect of Think Climate People: Think Climate Places and Think Climate Prosperity the Council started to embed carbon reduction into the business of the Council.
- 4.5 Since June 2022, there have been numerous reports of progress of projects presented to Cabinet, the Climate Change Cabinet Sub Committee and to Scrutiny Committees. A high level summary of progress has been included as a standing item in the quarterly Performance Reports considered by Cabinet, Quarter 4 update can be seen at [Section 7](#) for Illustrative purposes.
- 4.6 By mirroring the priorities in the Council's current Corporate Plan; i.e. Think Climate People: Think Climate Places and Think Climate Prosperity, the Council has started to embed the Climate Change Strategy and carbon reduction into the business of the Council.
- 4.7 This report provides an overview of progress against 'Think Climate RCT' during Quarter 1, with the opportunity to view the detailed plans across each of the Climate priorities. The ongoing work programme to deliver the Climate Change Strategy in 2023/24 will continue to embed within the action planning and reporting for the Council's priorities. Further specific reports, as deemed appropriate, will also continue to be reported to Cabinet, the Climate Change Cabinet Sub Committee and Scrutiny Committees, in accordance with the agreed work programmes.

5 CURRENT POSITION

- 5.1 This update considers four areas of focus within the Climate Change Strategy, acknowledging that there are also projects which overlap or do not have a clear 'home'. Where this is the case, the items are included in the areas of 'best fit'.

CLIMATE CHANGE – contributing to our Carbon Reduction Targets

Summary of progress to 30 June 2023

Council Specific

Our Carbon Footprint

We are on target to complete the 2022/23 Carbon Footprint calculation for submission to Welsh Government in September. The 2021/22 footprint as reported to [Climate Change Cabinet Sub Committee in December 2022](#) was 120,907.4 tonnes CO₂, with the largest part of our footprint, 67%, in our procured goods and services, and we continue to work with our suppliers to reduce their footprints. Actions to reduce our carbon footprint are set out in the Carbon Reduction Strategy and Action Plan 2023-25 agreed by [Cabinet in March 2023](#).

Staff Awareness

We continue to raise staff awareness. Formal methods include embedding the need to reduce carbon into new job descriptions and induction training, management briefings and across the performance management processes, supported by the 'Think Climate' webpage. Staff are a key stakeholder group in the [Climate Change Engagement Plan](#) agreed by Climate Change Cabinet Sub Committee in March 2023. E learning is nearing completion and will be available to staff and elected Members during Quarter 2.

Energy Efficiency and renewable energy

We have put in place a new process for identifying projects for the Carbon Reduction Programme through a review of energy audits and Display Energy Certificate data. Energy audits are ongoing, with the current focus on the top 50 consuming sites. This work is identifying potential wastage and putting in place more efficient energy efficient practices and targeted training for staff on site. The agreed 2023/24 Carbon Reduction Programme is being implemented and on target. The programme includes continuing to invest in solar energy installations on Council buildings and we are also progressing roof top solar PV screening for Council and leased buildings to inform work programmes.

Fleet

A plan to transition our fleet to Ultra Low Emission Vehicles was agreed by [Cabinet in September 2022](#) and we achieved our 2022/23 target of 14 cars, 78 light vans and 29 medium vans. Our progress is now dependent on finance, access to charging points and the results of a Fleet Maximisation project which will ensure that services have access to vehicles that best meet their needs. We are actively seeking funding to support the implementation of the Fleet Transition Plan. Welsh Government has confirmed that currently no grants are available for 2023/24. In the meantime, we are continuing to research alternative fuels and vehicle trials to ensure we keep abreast of technological developments. This quarter we attended Hydrogen vehicle and commercial EV demonstrations and trials.

Council Buildings, including schools.

The Office Accommodation Strategy 'Fit for the Future' and the Council's Operating Model and Working Arrangements Policy was approved by [Cabinet in May 2023](#) and is now being implemented. Among other things, this strategy locates Council buildings/services in buildings closer to the people that use, work and visit them and/or are accessible by public transport. As part of the strategy, we are progressing the move of the Council Headquarters from the Pavilions, Clydach Vale to Llys Cadwyn, Pontypridd. The consultation to inform the alternative use of [Clydach Vale](#) site as a location for a new 3 to 19 special school in RCT was agreed by [Cabinet in June 2023](#). Further detail on Sustainable Communities for Learning Programme can be found [here](#).

CLIMATE CHANGE – contributing to our Carbon Reduction Targets

Across the County Borough

Think Climate People

1. We put in place campaigns to support and encourage lifestyle choices and highlighted the Council's work across a range of services and projects including: [the roll out of the new recycling arrangements](#) in advance of, and as part of, changes introduced in July 2023; raising awareness of local '[Lost Peatlands](#)' project and the RCT Local Nature Partnership [Living Landscapes Events](#) and a range of national climate and environmental campaigns.
2. Prepared for the opening of Canolfan Calon Taf at Ynysangharad War Memorial Park, which aims to engage people in their local environment, contribute to activities with positive climate impact and increase expertise and a love of nature.
3. Continued to develop our bid for 'Sustainable Food Places' Bronze Award to be submitted in September 2023.
4. Helped to promote sustainable, local food in services and communities through initiatives including, Community Pantries and fridges and strengthening the Community Food Growing networks, Food Pantry and 'Big Bocs Bwyd' networks. However, this continues to prove challenging as a result of the Cost of Living crisis.
5. Implemented further developments in our '[Think Climate](#)' Web presence and following agreement of an Engagement Plan by the [Climate Change Cabinet Sub Committee in March 2023](#), we met with the Older Peoples' Forum and put in place arrangements for face to face engagement with residents during July, August and September.
6. Continued to deliver workshops to support residents with Energy Efficiency measures.
7. Continued to work with third sector and community partners to maximise our resources and seek and showcase areas of expertise and numerous environmental volunteering opportunities across the County Borough.

Think Climate Places

1. Continued to develop and support the land based Solar Farm in Coed Ely, Hydro schemes including the Dare Valley and Treforest Weir projects with Geothermal projects also in the pipeline, subject to funding.
2. Saw the contractor starting work on the construction of the Amgen 1.5 MW single wind turbine.
3. Completed early stages of preparation to procure a 200KW Solar PV Development to decarbonise energy consumption at the waste water treatment plant in Bryn Pica.
4. Secured grant funding of £396k from Welsh Government/Transport for Wales for 2023/24 to continue to implement EV Charging Strategy.
5. Increased the tonnage of household goods reused in [Council reuse outlets](#) from 68.05 tonnes in Q4 2022/23 to 80.59 tonnes for Q1 2023/24.
6. Continued to investigate how we can legally recycle or reuse seized and forfeited goods.
7. Progressed the development of Active Travel routes for Treorchy/Treherbert and Cwmbach as part of Cynon Trail and Maerdy/Ferndale.
8. Progressed combined mapping layer, which includes tree canopy coverage and natural tree regeneration. The information emerging will inform the priority areas for new tree planting.

Think Climate Prosperity

The Council has taken a number of steps to support people in poverty, many of which also reduce carbon emissions and making existing homes more energy efficient. We are currently researching data and evidence to inform the new Affordable Warmth Strategy. In the meantime, we continued to

CLIMATE CHANGE – contributing to our Carbon Reduction Targets

deliver strategic schemes including the joint promotion of '[Nest](#)' home energy services with Welsh Government and progressed the creation and implementation of 'ECO Flex' scheme and [Great British Insulation Scheme](#) which will enable additional external funding to be levered into the area. Scoping joint project with Cwm Taf LHB in respect of 'Heat and Save' interventions for residents affected by living in cold related homes with a view to improving the referral process to engage with these residents. This quarter

- 47 new Heating Grant applications were received.
- 23 Heating Grants were completed with £75k grant being awarded.
- 1 Minor Heat and Save Assistance grant has been completed.
- 12 referrals were made to the Housing Energy Officer, for advice on energy saving measures or assistance that could help them with their bills.
- 38 Solar Panel Grant applications were received.
- 28 Solar Panel Grants were completed (£31k grants awarded).

We also

1. Progressed the new RCT eco School Awards to be launched in the Autumn term. The Award comprises three sections: biodiversity, waste management and carbon management. As part of the evidence for the award, we started to develop school-based dashboards. Once in place, the Dashboards will help schools to monitor carbon and energy saving.
2. Continued to work with suppliers to help them to identify and reduce their footprints.
3. Worked with 'Visit Wales' (VW) to start to develop an RCT Sustainable Accommodation Toolkit using VW's accreditation scheme to identify visitor accommodation in RCT which incorporates aspects of sustainable and green tourism.
4. Implemented a new package of grant support for local businesses. The criteria have changed to allow businesses to use grants to meet their carbon reduction and energy efficiency needs, i.e.:
 - a) The Enterprise Investment Fund has been broadened to include support for carbon reduction.
 - b) The Large Scale Property Improvements grant has been refocussed to encourage energy efficiency and reduce carbon emissions.
 - c) A Commercial Improvement Grant has been introduced which will support larger scale improvements to commercial buildings with energy efficiency intrinsic to design e.g. replacement windows and doors, shop fronts.

The associated action plan can be viewed by [clicking here](#)

6 EQUALITY AND DIVERSITY IMPLICATIONS AND SOCIO-ECONOMIC DUTY

There are no equality and diversity or socio-economic duty implications as a result of the recommendations set out in the report.

7 CONSULTATION/ENGAGEMENT/INVOLVEMENT

There are no specific consultation implications as a result of the recommendations set out in the report.

8 FINANCIAL IMPLICATION(S)

There are no stand-alone financial implications resulting from the recommendations set out in the report.

9 LEGAL IMPLICATIONS OR LEGISLATION CONSIDERED

There are no legal implications aligned to this report.

10 LINKS TO CORPORATE AND NATIONAL PRIORITIES AND THE WELL-BEING OF FUTURE GENERATIONS ACT

- 10.1 The Council has committed to becoming a Carbon Neutral organisation by 2030 and to work with residents and businesses to ensure the whole County Borough is Carbon Neutral as close as possible to the 2030 target. This supports and aligns directly to the priorities of the Council's Corporate Plan 'Making a Difference' – 2020-24.
- 10.2 This report reflects the Sustainable Development principle of the Well-being of Future Generations Act by improving all aspects of Well-being through 'Think Climate RCT'; taking steps to make sure that decisions we take today do not affect future generations from making the decisions they need in the future and contributing to the seven national Well-being Goals as set out in Appendix A of 'Think Climate RCT'.

11 Conclusion

- 11.1 The Council has a target to become a Carbon Neutral Council by 2030, and for the County Borough to be as near to Carbon Neutral as possible by the same date. Tackling Climate Change Strategy 'Think Climate RCT' set out a framework of the action the Council will take to make significant progress and lay the strong foundations to enable the Council to make progress towards achieving the 2030 targets as well as contributing to the Welsh Government carbon reduction ambitions for Net Zero public sector by 2030 and its target for a Net Zero Wales by 2050 or sooner.
- 11.2 This report provides an update of the first three months of 2023/24. Whilst the Council can demonstrate positive steps towards meeting Carbon reductions targets, across the Council to date, continuing progress will depend on a number of factors outside our direct control, including access to funding, technology, skills; lifestyle choices of our residents and wider policy direction and integration emerging from Welsh Government. Further embedding of carbon reduction into the business of the Council through the new Corporate Plan will continue to strengthen the Council's own arrangements.
- 11.3 Achieving our targets requires all stakeholders and communities of Rhondda Cynon Taf to work together. The Council will continue to work with all stakeholders across the County Borough, the region and across Wales

LOCAL GOVERNMENT ACT, 1972
as amended by
THE ACCESS TO INFORMATION ACT, 1985
RHONDDA CYNON TAF COUNTY BOROUGH COUNCIL
LIST OF BACKGROUND PAPERS
Climate Change Cabinet Sub Committee
27 September 2023

REPORT OF: The Chief Executive

**ITEM: IMPLEMENTATION OF TACKLING CLIMATE CHANGE STRATEGY '[THINK CLIMATE RCT](#)' - QUARTER 1
PROGRESS UPDATE**

Contact Officer: Lesley Lawson

This page is intentionally left blank



RHONDDA CYNON TAF COUNTY BOROUGH COUNCIL

CLIMATE CHANGE CABINET SUB COMMITTEE

27TH SEPTEMBER 2023

‘NATURE ON YOUR DOORSTEP’: UPDATE ON THE IMPLEMENTATION OF THE LIVING LANDSCAPE PROJECT IN RHONDDA CYNON TAF

REPORT OF DIRECTOR OF PROSPERITY AND DEVELOPMENT IN DISCUSSIONS WITH THE CABINET MEMBER FOR PROSPERITY AND DEVELOPMENT

Author(s): Simon Gale

1. PURPOSE OF THE REPORT

- 1.1 The purpose of the report is to update Members on Local Places for Nature grant funded works undertaken in 22/23 and planned for 23/24 and 24/25.

2. RECOMMENDATIONS

- 2.1 It is recommended that Members consider the progress reported, the planned expenditure and how this contributes to the broader objective of developing a Living Landscape project across RCT.

3. REASONS FOR RECOMMENDATIONS

- 3.1 To ensure the use of Welsh Government ‘Local Places for Nature’ funding to the Local Nature Partnership, contributes to the achievement of ‘Action for Nature’ the nature plan for RCT, and to the Council’s biodiversity aspirations.

4. BACKGROUND

- 4.1 In October 2021, cabinet received a report <https://rctcbc.moderngov.co.uk/documents/s31455/Report.pdf?LLL=0> on the Living Landscape project. This identified 29 potential sites for a pilot project to promote the sustainable management of Council owned land and to engage local communities in the project. At the time funding was being sought to progress the work.

- 4.2 The RCT Local Nature Partnership was able to access Welsh Government 'Local Places for Nature' funding to implement capital works at the 29 sites in 2022/23 as they met the grant criteria as potential '**Nature on Your Doorstep**' sites. Local Places for Nature' is a Wales-wide programme administered by Wales Council for Voluntary Action (WCVA) and delivered by Local Nature Partnerships in all Local Authority and National Park areas.
- 4.3 In 22/23 this funding (£335.7k) allowed the creation of 29 natural capital assets, with spending on fencing, water provision for sites with conservation grazing, woodland works, machinery (for biodiversity management), interpretation boards and web site development. A map of the sites is appended (Appendix One). Other expenditure included homes for wildlife, including a major programme of swift box installation on suitable school buildings. In addition to the capital allocation, £60k revenue was provided to administer the spend. The Council's former biodiversity apprentices were the successful applicants for the two temporary Biodiversity Officer posts.
- 4.4 In early August this year, Welsh Government approved further funding for the current financial year (23/24, £413.5k) and for 2024/25 (£538.8k) in accordance with our submitted plan to create additional 'Nature on your Doorstep' sites on Council owned land. Again, an annual revenue allocation (£72k) is in place to support the continuation of the Biodiversity Officers posts until (at least) March 2025.
- 4.5 The approved plan for the period 23/24 and 24/25 is for a further 15 'Nature on Your Doorstep' sites to be created in each financial year. (minimum of 30 over 2 years). Although the capital allocations for each financial year are fixed, the two-year programme allows more flexibility and the inclusion of sites with longer lead in times, where works are seasonal or need to be phased. With this in mind, the draft plan submitted to Welsh Government in June, included a 'long-list' of potential sites, from which the 30 sites will be selected. In drawing up the list, coverage of all wards across the County Borough has been sought, but this has not been possible in every case, largely due to the lack of suitable Council landownership in some wards. Unfortunately, school grounds cannot be considered as Nature on Your Doorstep sites unless they are open to the public. Discussions with land managers are ongoing to finalise the site list for 23/24. The type of works planned for the current year are similar to those undertaken at the original 29 sites and are designed to provide the infrastructure for sustainable long-term management for biodiversity and for public enjoyment of nature close to home. Appendix 2 includes the map of the 'long-list' sites. Appendix 3 is the combined ward list, identifying the 22/23 sites, the priority sites for 23/24, those removed following

investigation and sites requiring further discussion. Wards with no currently identified sites are also included.

- 4.6 As a condition of the funding, the Council is required to maintain the natural capital assets created and the equipment purchased for a minimum of five years. There is also a requirement to publicise the project and the contribution of Welsh Government funding to the creation of community assets.
- 4.7 In addition to the capital and associated revenue for Local Places for Nature, Welsh Government provided additional **Biodiversity revenue funding** for the period October 22 to March 23 (£36k) and has allocated biodiversity revenue for 23/24 and 24/25 (£48k each year). This funding is a result of the Biodiversity Deep-Dive undertaken by Welsh Government following the declaration of a Nature Emergency. The revenue funding has specific output requirements relating to the Local Nature Partnership, the Council's S.6 Biodiversity Duty and the United Nations '30 by 30' goal. Further details are given in Appendix 4
- 4.8 These outputs align with work currently being progressed by the Partnership and by the Council and the funding is a welcome recognition of the role of local action for biodiversity. It is noted that the role of communications and social media is reflected in the biodiversity output measures as well as in the 'Nature on your Doorstep capital spending.
- 4.9 The **Living Landscape** project, is a key action in the Local Nature Plan for RCT <https://rctlnp.wixsite.com/rct-actionfornature> prepared by the Partnership and received by members [Cabinet Report MTSP One4aLL LG \(moderngov.co.uk\)](#) in October 2022. The project provides a framework for sustainable land management for biodiversity and climate change across Rhondda Cynon Taf. The project is also a key delivery mechanism for the Council's Section 6 Biodiversity Duty.
- 4.10 The sites currently being developed have particular importance for engaging local communities, however the 'Nature on Your Doorstep' capital funding is not designed for long-term community involvement. Promotion and engagement with all potential audiences and users is seen by the Partnership to be key to the successful delivery of the project. The Partnership is therefore investigating opportunities to include walks, talks and events at various sites. The grant funding has enabled the development of the Living Landscape web site, and in the current financial year the exciting potential for social media promotion through the production of RCT Living Landscape films is being explored. These short films will focus on sites, their biodiversity and their management. This will enable the Council to engage an on-line audience and introduce the sites to local residents and visitors.

- 4.11 As mentioned in the earlier report, the long-term potential of the Living Landscape project is to bring together a network of sites in biodiversity management, reflecting the important habitats across RCT. All of the pilot sites and the current proposals are on Council owned land, however there are a number of sites being managed for biodiversity by others. These include sites managed by developers as a requirement of planning agreements, Wildlife Trust reserves and others. As the priority given to tackling the nature and climate emergency increases, further sites are likely to come forward. The Living Landscape project and the Local Nature Partnership provides a mechanism to share local knowledge and expertise, and co-ordinate a landscape scale approach to nature conservation.
- 4.12 This landscape scale is important for biodiversity conservation, especially in a changing climate. Networked sites, that can allow habitats to evolve and adapt to change, and prevent species becoming isolated, are a central focus of the emerging NRW Area Statement for south central Wales. It will also be an important component of the Green Infrastructure Assessment required for the review of the Local Development Plan. RCT is fortunate to host extensive and connected areas of semi-natural habitat, rich in biodiversity and close to peoples' homes and workplaces. The Living Landscape project provides the opportunity to actively manage land for nature. Through the development of a network of biodiversity sites it will help to support the biodiversity functioning of RCT. The project also offers the opportunity for innovative and active engagement with local people and communities. Its nature-based solutions will also directly contribute to climate change mitigation.
- 4.12 As a reflection of this wider role, the Council's Climate Change Strategy includes a Performance Measure to 'Increase the number of Council and partner sites actively managed for nature to 100 by 2030'. In 22/23 29 sites were achieved (totalling 40ha) and, as indicated in this report, further sites will be added in the next 2 years. This performance measure will assist the Council to support the UN (and Welsh Government) goal of 30% of land and sea to be in biodiversity management by 2030.

5. EQUALITY AND DIVERSITY IMPLICATIONS / SOCIO-ECONOMIC DUTY

- 5.1 There are no implications as a direct result of this report.

6. WELSH LANGUAGE IMPLICATIONS

- 6.1 There are no Welsh language implications as a result of the recommendations set out in the report.

7. CONSULTATION / INVOLVEMENT

The sub committee's discussion and recommendation will inform the cabinet decision

8. FINANCIAL IMPLICATION(S)

The immediate costs associated with this work can be met from the allocated grant funding. The works are designed to promote sustainable long-term management of Council owned sites in line with our Biodiversity Duty. The Council will be responsible for the maintenance of assets for 5 years as detailed in para 4.6 above.

9. LEGAL IMPLICATIONS OR LEGISLATION CONSIDERED

The Environment (Wales) Act 2016 is relevant. Part One covers the Sustainable Management of Natural Resources and includes the Biodiversity Duty (S6). This part also sets the context for policy and action for the Welsh Government and Natural Resources Wales. Part Two considers climate change and informs Welsh Government policy in this regard.

10. LINKS TO THE CORPORATE AND NATIONAL PRIORITIES AND THE WELL-BEING OF FUTURE GENERATIONS ACT.

10.1 The Living Landscapes project contributes to the Council's priorities as set out in the Council's Corporate Plan. Specifically, it contributes to 'People' by Encouraging all residents to lead active and healthy lifestyles and maintain their mental wellbeing and to 'Places' by Getting the best out of our parks by looking after and investing in our greenspaces and specifically, Delivering natural carbon storage solutions such as those provided by trees, peat bogs, marshy grassland and other natural habitats across the County Borough to enhance air quality and reduce the impact of greenhouse gasses.

10.2 It also reflects the five ways of working in the Well-being of Future Generations Act. Sustainable management is based on long-term considerations and is focused on preventative and precautionary action. The Living Landscape project aims to involve all the relevant stakeholders and to integrate the biodiversity, carbon, water and community benefits in the proposed works. It will contribute specifically to the Resilience and Global Responsibility goals of the Act, but in the longer term it could have implications for all the goals.

11. **CONCLUSION**

- 11.1 The Living Landscape Project continues to develop, supporting both the Local Nature Partnership's 'Action for Nature' and the Council's climate change and biodiversity policies. The contribution of the Welsh Government's 'Local Places for Nature' grant funding to developing 'Nature on your Doorstep' in RCT sites is gratefully acknowledged.

LOCAL GOVERNMENT ACT 1972

AS AMENDED BY

THE LOCAL GOVERNMENT (ACCESS TO INFORMATION) ACT 1985

RHONDDA CYNON TAF COUNTY BOROUGH COUNCIL

CLIMATE CHANGE CABINET SUB COMMITTEE

27TH SEPTEMBER 2023

**REPORT OF DIRECTOR OF PROSPERITY AND DEVELOPMENT IN
DISCUSSIONS WITH THE CABINET MEMBER FOR PROSPERITY AND
DEVELOPMENT**

Item:

Background Papers

none

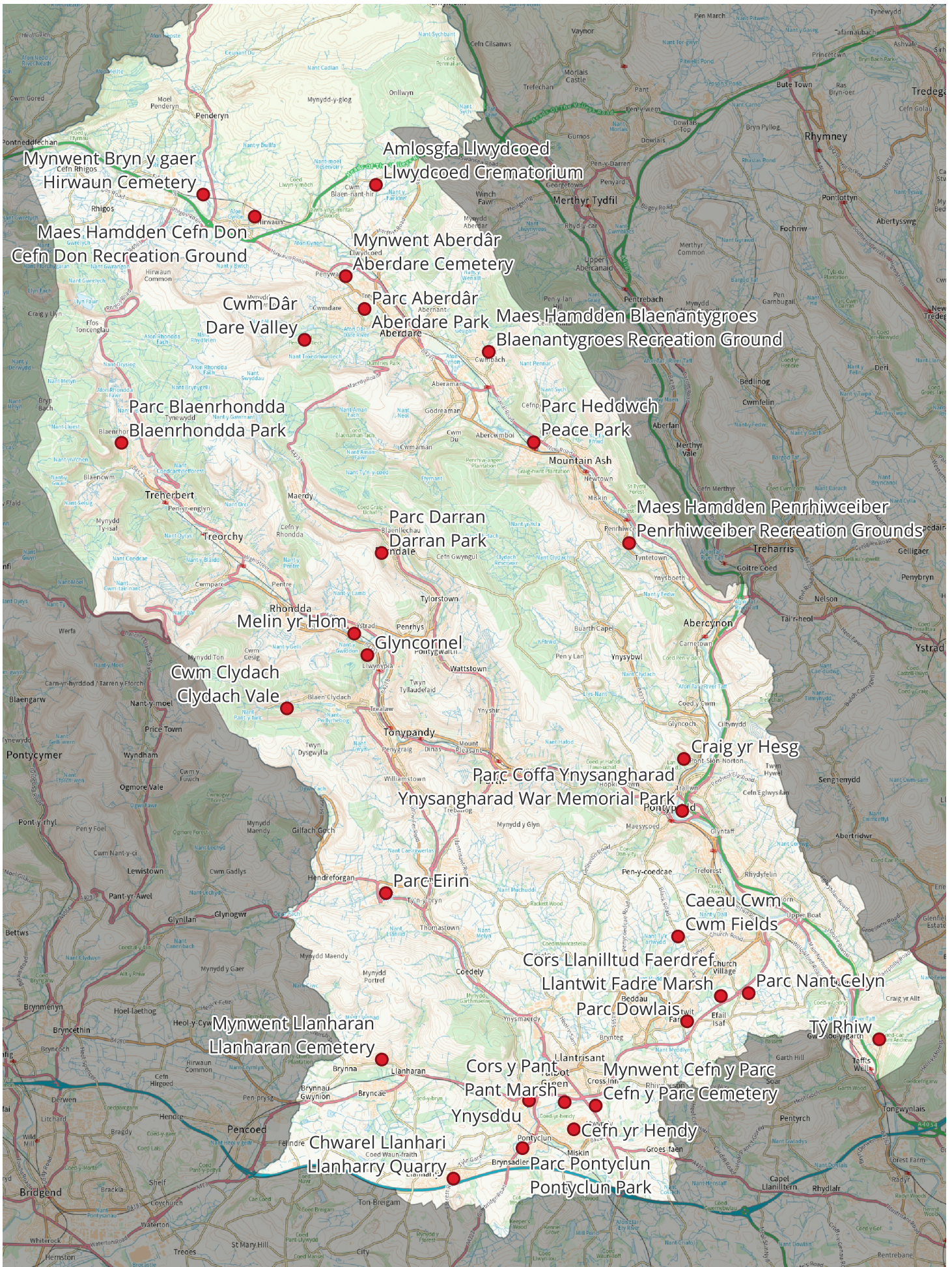
Appendix One: Map of the 2022/23 Nature on Your Doorstep sites

Appendix Two: Map of initial proposed 'long-list' sites from which 23/24 and
24/25 sites will be chosen.

Appendix Three: Ward and potential site table

Appendix Four: Biodiversity Revenue outputs 23-25

This page is intentionally left blank

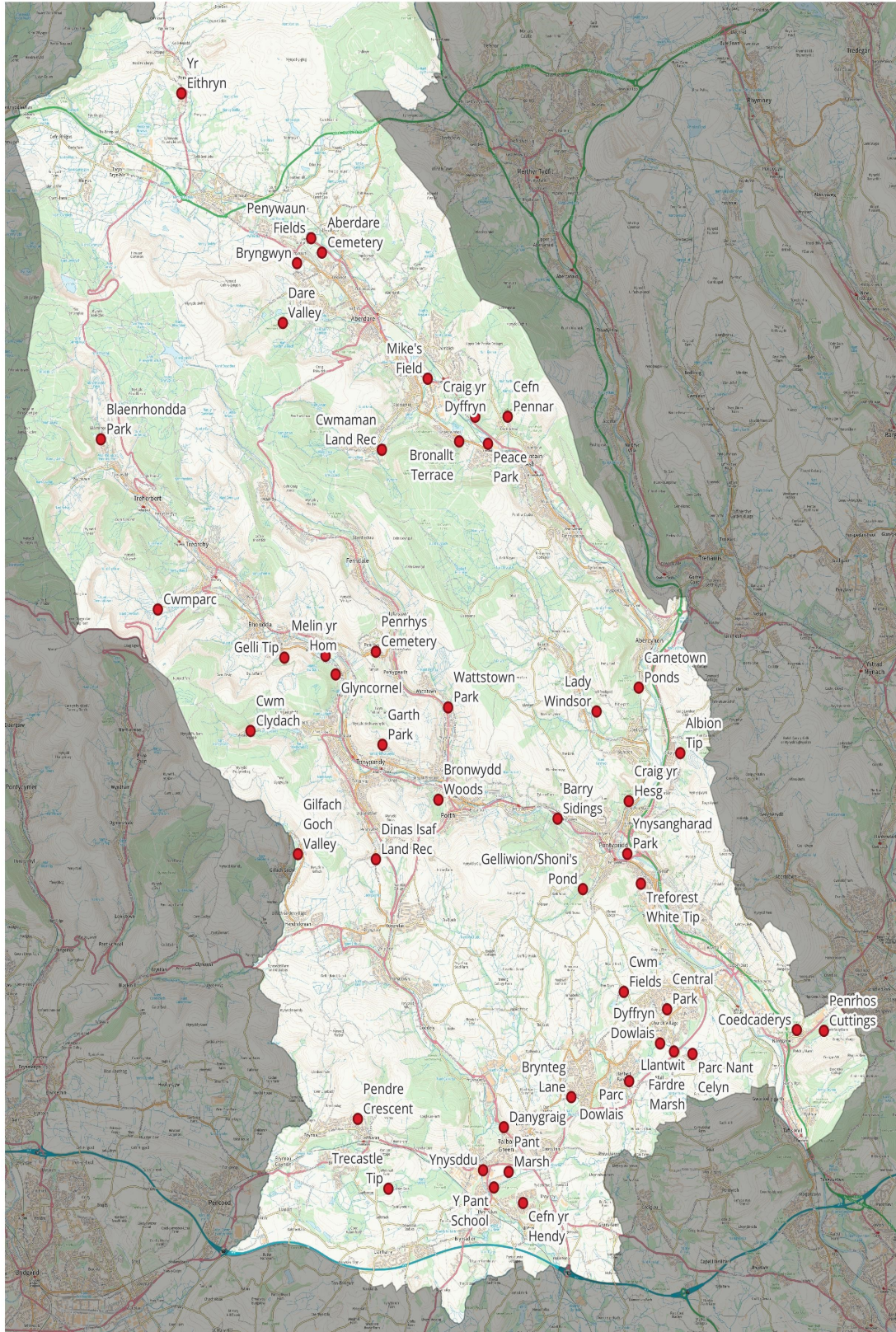


© Hawlfraint y Goron a hawliau cronfa ddata 2023 Arolwg Ordnans 100023458
 © Crown copyright and database rights 2023 OS 100023458

Lleoliadau Tirweddau Byw
Living Landscapes Sites

Cynhyrchwyd ar 13/02/2023 gan Kate Stock
 Produced 13/02/2023 by Kate Stock

This page is intentionally left blank



Proposed RCT Nature on your Doorstep project sites

Scale 1:123000

Produced 15/06/23 Kate Stock

© Crown copyright and database rights 2023 OS 100023458



This page is intentionally left blank

RCT Local Places for Nature: Nature on Your Doorstep

'Long List' of potential sites (as of 15 June 2023 plus later additions)

	Name	ward	notes
	Cwmaman land rec	Aberaman	Further discussions
	Mike's Field	Aberaman	Further discussions
1	Bronallt Terrace	Aberaman	Priority for 23/24
2	Carnetown ponds	Abercynon	Priority for 23/24
3	Aberdare Canal	Aberdare East	Priority for 23/24, added
1	<i>Aberdare Cemetery</i>	<i>Aberdare West / Llwydcoed</i>	22/23
	Aberdare Cemetery extension	Aberdare West / Llwydcoed	Further discussions
2	<i>Park Lane (Aberdare Park)</i>	<i>Aberdare West / Llwydcoed</i>	22/23
3	<i>Dare Valley Country Park</i>	<i>Aberdare West / Llwydcoed</i>	22/23
4	Dare Valley Phase 2	Aberdare West / Llwydcoed	Priority for 23/24
4	<i>Llwydcoed Crematorium</i>	<i>Aberdare West / Llwydcoed</i>	22/23
	Penywaun fields	Aberdare West / Llwydcoed	Further discussions
5	Brynteg Lane	Beddau and Tyn-y-nant	Priority for 23/24
5	<i>Llanharan Cemetery</i>	<i>Brynna and Llanharan</i>	22/23
	Pendre crescent	Brynna and Llanharan	Site removed following investigations
6	<i>Cwm Fields</i>	<i>Church Village (and Llantwit Fardre)</i>	22/23
	Cwm Fields phase 2	Llantwit Fardre and Church Village	
	Central Park	Church Village	Further discussions
	Dyffryn Dowlais	Church Village	Further discussions
7	<i>Clydach Vale</i>	<i>Cwm Clydach</i>	22/23
	Cwm Clydach phase 2	Clydach Vale	
	Albion tip	Cilfynydd	Further discussions
8	<i>Blaennant yr Groes Rec</i>	<i>Cwmbach</i>	22/23
6	Craig yr Dyffryn/Mill Road	Cwmbach (and Mountain Ash)	Priority for 23/24
		Cymer	Currently no sites found
9	<i>Darran Park</i>	<i>Ferndale and Maerdy</i>	22/23
7	Gilfach Goch valley	Gilfach Goch	Priority for 23/24
10	<i>Craig yr Hesg</i>	<i>Glyncoch (part, most in Pontypridd Town)</i>	22/23
		Glyncoch	Currently no accessible sites found
8	Gelliwion/Shoni's Pond	Graig and Pontypridd West	Priority for 23/24
9	Barry Sidings Countryside Park	Graig and Pontypridd West	Priority for 23/24
		Hawthorn and Lower Rhydyfelin	Currently no sites found
11	<i>Cefn Don</i>	<i>Hirwaun, Penderyn and Rhigos</i>	22/23
12	<i>Hirwaun Cemetery</i>	<i>Hirwaun, Penderyn and Rhigos</i>	22/23
	Yr Eithryn	Hirwaun, Penderyn and Rhigos	Further discussions
13	<i>Llanharry Quarry</i>	<i>Llanharry</i>	22/23 S106
	Trecastle Tip	Llanharry	Further discussions

14	<i>Cefn yr Parc Cemetery</i>	<i>Llantrisant and Talbot Green</i>	<i>22/23</i>
15	<i>Pant Marsh</i>	<i>Llantrisant and Talbot Green</i>	<i>22/23 S106</i>
	Pant marsh phase 2	Llantrisant and Talbot Green	
9	Danygraig	Llantrisant and Talbot Green	Further discussions
10	Y Pant school woodland	Llantrisant and Talbot Green	Priority for 23/24
6 as above	<i>Cwm Fields</i>	<i>Llantwit Fardre (and Church Village)</i>	<i>22/23</i>
16	<i>Parc Dowlais</i>	<i>Llantwit Fardre</i>	<i>22/23</i>
	Parc Dowlais phase 2	Llantwit Fardre	
17	<i>Parc Nant Celyn</i>	<i>Llantwit Fardre</i>	<i>22/23</i>
	Parc Nant Celyn phase 2	Llantwit Fardre	
18	<i>Llantwit Fardre Marsh</i>	<i>Llantwit Fardre</i>	<i>22/23</i>
	Llantwit Fardre phase 2	Llantwit Fardre	
19	<i>Glyncornel</i>	<i>Llwynypia</i>	<i>22/23</i>
	Glyncornel phase 2	Llwynypia	
20	<i>Peace Park</i>	<i>Mountain Ash</i>	<i>22/23</i>
	Peace Park phase 2	Mountain Ash	
6 above	Craig yr Dyffryn	Mountain Ash (and Cwmbach)	Priority for 23/24
	Cefn Pennar land reclamation	Mountain Ash	Further discussions
21	<i>Penrhiwceiber Recreation ground</i>	<i>Penrhiwceiber</i>	<i>22/23</i>
		Pentre	Currently no sites found
11	Bryngwyn, Penywaun	Penywaun	Priority for 23/24
22	<i>Ynysddu</i>	<i>Pontyclun central</i>	<i>22/23</i>
	Ynysddu phase 2	Pont-y-clun Central	
23	<i>Cefn yr Hendy</i>	<i>Pontyclun East</i>	<i>22/23 S106</i>
24	<i>Pontyclun Park</i>	<i>Pontyclun west</i>	<i>22/23</i>
10 as above	<i>Craig yr Hesg</i>	<i>Pontypridd Town (small part in Glyncoch)</i>	<i>22/23</i>
	Craig yr hesg phase 2	Pontypridd Town	
12	Bronwydd Woods	Porth	Priority for 23/24
		Rhydyfelin Central	Currently no sites found
25	<i>Ty Rhiw</i>	<i>Taffs Well</i>	<i>22/23</i>
13	Penrhos Cutting	Taffs Well	Priority for 23/24
14	Coedcaederys	Taffs Well	Priority for 23/24
		Tonteg	Currently no sites found
		Tonypandy	Currently no sites found
		Tonyrefail East	Currently no sites found
26	<i>Parc Eirin</i>	<i>Tonyrefail West</i>	<i>22/23 S106</i>
18	Dinas Isaf land rec	Tonyrefail West	Site removed following investigations
27	<i>Ynysangharad Park</i>	<i>Trallwng</i>	<i>22/23</i>
	Ynysangharad Park phase 2	Trallwng	
	Garth Park	Trealaw	Further discussions
	Treforest white tip	Treforest	Further discussions
28	<i>Blaenrhondda Park</i>	<i>Treherbert</i>	<i>22/23</i>
	Blaenrhondda Park phase 2	Treherbert	
15	Cwmparc	Treorchy	Priority for 23/24

16	Penrhys Cemetery	Tylorstown and Ynyshir	Priority for 23/24
	Wattstown Park	Tylorstown and Ynyshir	Further discussions
		Upper Rhydyflin and Glyntaf	Currently no sites found
	Lady Windsor	Ynysybwl	Further discussions
29	<i>Melin yr Hom</i>	<i>Ystrad</i>	<i>22/23</i>
	Melin yr Hom phase 2	Ystrad	
	Gelli tip	Ystrad	Further discussions

Note: all sites to be investigated, not all may prove suitable but additional eligible sites may come forward over the grant period

This page is intentionally left blank

Appendix Four: Biodiversity Revenue (as accepted by Welsh Government)

A: .Output requirements

Biodiversity duties output measures	Target 23/25
<p>Working with partners help prioritise and develop a range of projects suitable for funding under the Nature Networks Programme.</p> <p>Target: How many partners supported/ how many projects developed</p>	<p>2+projects</p>
<p>Provide training to LNP coordinators to help understand actions required to deliver 30x30 target at a local level</p> <p>Target: Number of training sessions given to LNP coordinators</p>	<p>?</p> <p>We will give training to the RCTLNP</p>
<p>Refresh local NRAPs to reflect 30x30 target and new global biodiversity framework post COP 15</p> <p>Target: Number of NRAPs refreshed</p>	<p>1</p>
<p>Identify where LNP's could be expanded to include partners not currently engaged especially the private sector</p> <p>Target: Number of additional LNP partners</p>	<p>5+</p>
<p>Promote and disseminate best practice for the undertaking of Section 6. Undertake actions that have encouraged the embedding of good practice. Awareness raising of the challenges to biodiversity and actions to promote ways to reverse the decline.</p> <p>Target: Number of events/activities where LNP has offered advice, held training sessions or advised on any type of biodiversity planning, such as NRAPs.</p>	<p>5+</p>
<p>Each LNP to develop and/or refresh communication plan</p> <p>Target: Comms plan developed/refreshed</p>	<p>1</p>

2. Rhondda Cynon Taf planned works to meet the targets (as approved by Welsh Government)

- *1. Provide training to LNP coordinators to help understand actions required to deliver 30x30 target at a local level.*

The following areas of work will be covered over the two financial years.

Mapping of S106 and other land in biodiversity management or with potential for biodiversity management

Living Landscape project development including potential Local Places for Nature sites, developer sites, Wildlife Trust sites, NRW (SSSI etc. possibly other NRW managed land such as forestry and floodbanks), connections with NRW Area Statement ecological networks, the Review Local Development Plan (see below), events and community engagement

- *2. Refresh local NRAP's to reflect 30x30 target and new global biodiversity framework post COP 15 (note that NRAP will be refreshed next year so will run into following financial year)*

The majority of this work relating to <https://rctlnp.wixsite.com/rct-actionfornature>

will be developed in 24/25, following the completion of the National Nature Recovery Action Plan. Initial consideration via LNP meetings.

- *3. Identify where LNP's could be expanded to include partners not currently engaged especially the private sector*

The following areas of work will be covered over the two financial years.

With **Developers/Private sector** we will investigate possibilities via S106 work (above and below), continue joint dormouse projects with a local consultant and explore a potential contact with private industrial estate manager.

In the **Health sector** we will develop contacts via RCT Green Social Prescribing Network (RCTGSPN)

For **community organisations and social enterprises** we will develop contacts via Keep Wales Tidy, RCTGSPN and the RCT Climate Action Network (which may also include some private sector interests.)

In the **Education Sector** we will take forward our relationship with Pencoed College, exploring the possibilities of longer term (post college) engagement with local students training in the land management industries (including farmers, contractors etc.). We are also developing contacts with the University of South Wales, and are currently exploring joint projects relating to soils and peat.

- *4. Each LNP to develop and/or refresh communication plans*

The following areas of work will be covered over the two financial years.

Proposed developments for the **LNP website**: <https://rctlnp.wixsite.com/rct-actionfornature> include the Welsh translation, social media links and preliminary works relating to COP15

and 30 by 30 (above). For the **Living Landscapes website**, site development, events and community engagement, and social media are planned.

- *5. Promote best practice and implementation of s.6 duty.*

The following areas of work will be covered over the two financial years.

ALGE membership: corporate for graduate and biodiversity officers as well as the Council's ecologist

Grassland management: following up the RCT grazing license 5 year review, with site visits to investigate potential inclusion in Living Landscape project (some may be potential Local Places for Nature sites), following up verge management monitoring and reporting, Lets Talk Wildflowers <https://lets-talk.rctcbc.gov.uk/let-s-talk-wildflowers> etc. and exploring options to embed the learning from the 'Healthy Hillsides' wildfire risk reduction project in Council land management.

SUDS: establishing a new consultation procedure, developing biodiversity guidelines for RCT with drainage colleagues

Internal training: bespoke for specific services, exploring potential for RCT corporate e-learning

Town and Country Planning: Input to the Review Local Development Plan especially regarding the Planning Policy Wales changes implications, the role of the Living Landscape project in the required Green Infrastructure Assessment and the use of S106 agreements.

Responding to requests

Council owned Land Investigating the application of 30 by 30 to the Council's land portfolio

This page is intentionally left blank



CROESO | WELCOME TO

CORS PANT MARSH

Rhan o Brosiect Tirwedd Fyw RhCT | Part of the RCT Living Landscape Project

RYDYN NI'N BYW YMA... ALLWCH CHI EIN GWELD NI?

Glöyn Adain Garpiog • Comma



© Bethan Dalton

Broga • Common Frog



© Bob Lewis

Baner y Gors • Yellow Iris



© Lyn Evans

Cwckill y Mynach • Monk's Hood



© Lyn Evans

Neidr y Gwair • Grass Snake



© Wayne Withers

Corsgudyn • Marsh Cinquefoil



© Lyn Evans

Britheg y Gors • Marsh Fritillary



© Bethan Dalton

Bronwen y Dŵr • Dipper



© Wayne Withers

WE LIVE HERE... CAN YOU SPOT US?

Cynefin

Tir glas ar orlffdir yn llawn rhywogaethau amrywiol yw Cors Pant, ac mae'n dibynnu ar lifogydd a llif uchel yr afon Clun. Mae hyn yn rhoi cymeriad unigryw ac arbennig i'r mosäig cyfoethog o laswelltiroedd niwtral a chorsiog, gwern a choetir gwlyb. Mae angen pori'n ystyrlon yn y cynefinoedd yma, rheoli'r coetiroedd gan ddefnyddio dull 'torri a chasglu' a rheoli planhigion ymledol.

Pryd i Ymweld

Yn yr haf, ewch i weld blodau lliw gwyn-hufen barf y bwch ac angyles y coed. Mae blodau pinc carpiog y gors yn bywiogi'r hesg tra bod cadwyni porffor o flodyn gwenwynig cwckill y mynach yn cuddio yng nghysgod glannau'r afon. Ar ddechrau'n hydref mae tarth o damaid y cythraul i'w weld yno. Yn y gaeaf mae giach yn bwydo yno ac yn y gwanwyn mae bras y cyrs i'w clywed yn canu.

Bioamrywiaeth

Mae'r cynefinoedd yma yn wych ar gyfer rhywogaethau megis y glöyn copor bach, gwyfyn ffacys a'r gwenynen claffrllys bach. Mae nadredd y gwair yn hela am frogaod yn y gwair gwlyb, mae bronwennod y dŵr yn chwilio am berdys yn yr afon wrth i ddyfrgwn grwydro heibio. Mae modd adnabod bodaod trwy glywed eu synau 'kee-yaa' unigryw, eu hadenydd llydan a chrwn a'u cynffonau byr. Mae planhigion y cynefin yma'n cynnwys gold y gors, gellesgen ac egllyn. Mae rhesi o hesg prin a chorsgudyn prydferth yn tyfu yn y cornentydd, a bacwn ac wy a dant y llew lleiaf yn tyfu ar y glaswelltir sych.

Habitat

Pant Marsh is a rare, species-rich floodplain grassland which depends on the River Clun's floods and high flows. This gives a special character to the rich mosaic of neutral and marshy grassland, swamp and wet woodland. These habitats need sympathetic grazing, 'cut and collect' and woodland management, and invasive plant control.

When to Visit

In summer, spot the creamy white flowers of meadowsweet and angelica. The pink ragged robin flowers enliven the sedge beds while violet-blue spires of the beautiful, but very poisonous, monk's-hood flower in riverbank shade. In early autumn there is a haze of blue-purple devil's-bit scabious. In winter, snipe feed and in spring, reed buntings sing.

Biodiversity

The habitats here are fantastic for species such as the small copper butterfly, burnet companion moth and the small-scabious bee. Grass snakes hunt for frogs in the marshy grass, dipper search for shrimp in the river riffles and otters pass through. Buzzards, with their cat-like 'kee-yaa' call, can be identified by their broad, rounded wings and short tails.

Characteristic plants include marsh marigold, flag iris and opposite-leaved golden saxifrage. Beds of rare bladder sedge and the beautiful marsh cinquefoil grow in wet runnels, with bird's-foot trefoil and rough hawkbit in the dry grassland.

Bwncath • Buzzard | © Wayne Withers



Mae Tirweddau Byw yn rhwydwaith o safleoedd sy'n cael eu rheoli er budd byd natur. Mae'r ardaloedd pwysig yma'n llawn bywyd gwyllt ac yn cysylltu ein cymunedau â chefn gwlad ehangach. Gallwn ni i gyd fwynhau'r lleoliadau arbennig yma - byd natur ar stepen eich drws.

Os ydych chi eisiau cymryd rhan, anfonwch e-bost at: biodiversity@rctcbc.gov.uk neu fwrw golwg ar: www.rctlnp.wixsite.com/rct-actionfornature

Cyllid Lleoeedd Lleol ar gyfer Natur gan Lywodraeth Cymru ar gyfer 'Prosiect Tirwedd Fioamrywiol RhCT: Byd Natur ar Stepen eich Drws'

Living Landscapes is a network of sites managed for wildlife.

These important areas are nature hotspots and connected stepping stones in the wider countryside. We can all enjoy these special places - nature on your doorstep.

If you would like to get involved, please contact us via: biodiversity@rctcbc.gov.uk Or visit: www.rctlnp.wixsite.com/rct-actionfornature

Local Places for Nature Funding from Welsh Government for 'RCT Biodiverse Landscape Project: Nature on Your Doorstep'



Ariennir gan Lywodraeth Cymru
Funded by Welsh Government



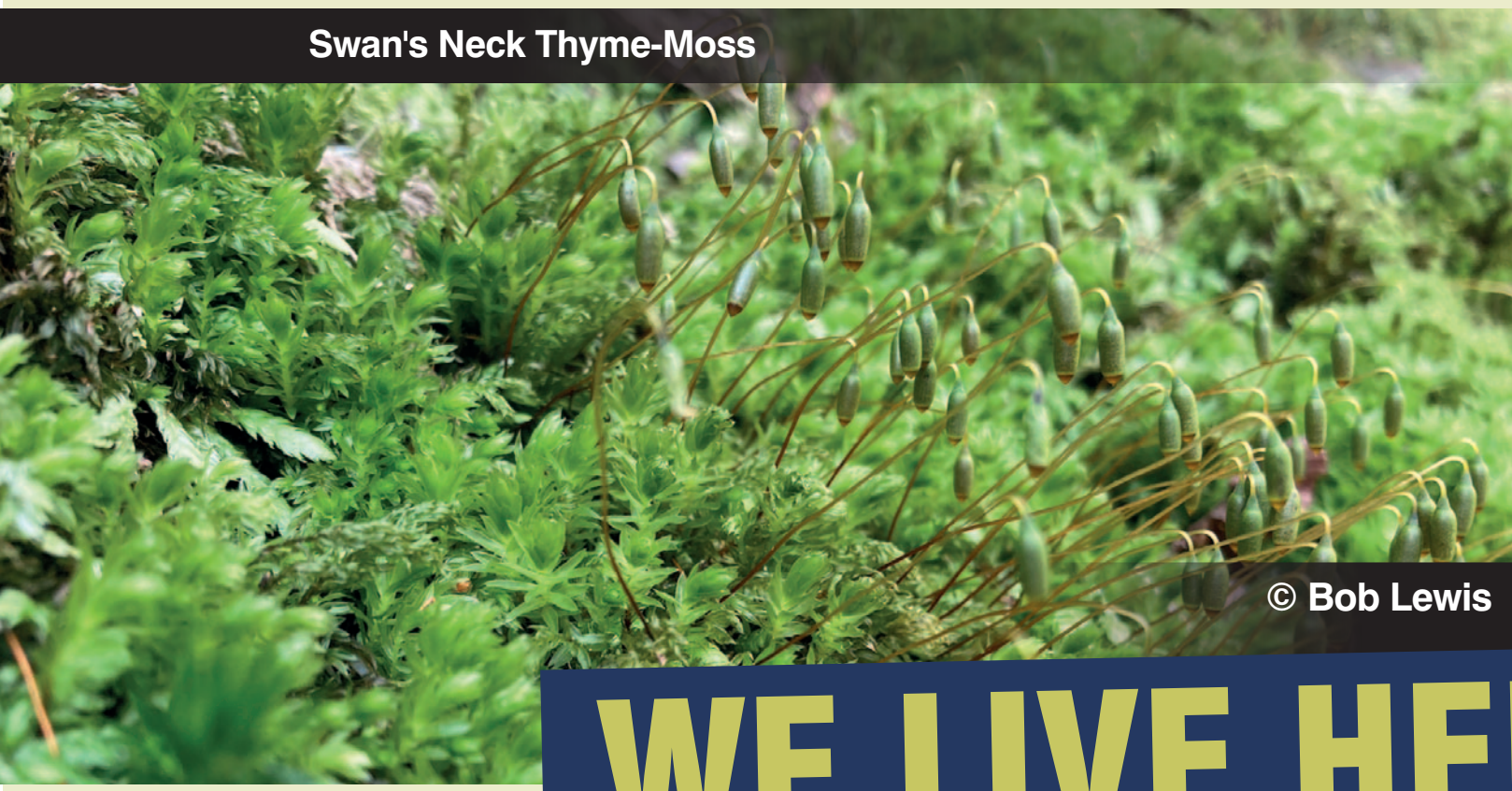
This page is intentionally left blank



CROESO I | WELCOME TO GLYNCORNEL

Rhan o Brosiect Tirwedd Fyw RhCT | Part of the RCT Living Landscape Project

RYDYN NI'N BYW YMA... ALLWCH CHI EIN GWELD NI?



WE LIVE HERE... CAN YOU SPOT US?

Cynefin

Mae'r coetir hynafol yma ar ochr gysgodol Cwm Rhondda Fawr yn lleoliad delfrydol ar gyfer fforestydd glaw Celtaidd neu goedwigoedd tymherus prin. Dydy'r aer yno heb ei lygru, ac mae'r tir yn cael cyflenwad cyson o ddŵr gan y nentydd a'r glaw. Mae'r coetir, sy'n gynefin mewn perygl, yn llawn coed derw, gwern, ynn a chyll sy'n gartref i nifer o fwsoglau, llyisiau'r afu, cennau a rhedyn.

Pryd i Ymweld

Mae blodau'n tyfu'n hwyr yng Nglyn Cornel - mae clychau'r gog yn dal i dyfu yno ar ôl iddyn nhw flodeuo ym mhobman arall. Dewch pan mae hi'n bwrw glaw a throchwch yn y dirwedd hudolus o fwsog lluosog a brigdwf cymhleth.

Bioamrywiaeth

Dewch â lens ac archwiliwch y tir, y coed, y cerrig a glannau'r afon a dewch o hyd i'r holl amrywiaeth o fwsoglau, llyisiau'r afu, cennau a ffwng sy'n gwneud fforestydd glaw Celtaidd mor unigryw.

Mae'r coetir yn gynefin arbennig i wyfynod, yn lle gwych i ystumod chwilio am fwyd, ac i ffwlbartau hela am lygod y gwair. Gwrandewch yn astud i glywed cogau, troellwyr mawr a thelorion y coed yn canu a chadwch lygad am walch glas a gwalch marthin yn hela jac-dos dros y coetir.

Habitat

Situated on a shady valley-side of the Rhondda Fawr, this ancient woodland is a prime location for a rare habitat – temperate or Celtic rainforest. Unpolluted air, endued in shade and fed by a steady supply of water from streams and the Welsh rain. This wonderful oak, alder, ash and hazel woodland is an endangered habitat, and home to a dizzying number of mosses, liverworts, lichens and ferns.

When to Visit

Glyn Cornel is a late bloomer, with the drifts of bluebells peaking when they have finished elsewhere. Come anytime it's raining to immerse yourself in a fairy-tale landscape of lush moss carpets and mist covered canopies.

Biodiversity

Grab a hand lens and scan the ground, trees, rocks, and riverbanks, and you will find a wonderful diversity of the mosses, liverworts, lichens, and fungi that make a Celtic rainforest so special.

The woodland is fantastic moth habitat and a superb place for foraging bats, while polecats hunt voles and field mice. Listen out for cuckoos, nightjars and wood warblers, and scan the skies for sparrowhawks and goshawks hunting jackdaws over the woodland.

Telur y Coed • Wood Warbler | © Tate Lloyd



Mae Tirweddau Byw yn rhwydwaith o safleoedd sy'n cael eu rheoli er budd byd natur. Mae'r ardaloedd pwysig yma'n llawn bywyd gwyllt ac yn cysylltu ein cymunedau â chefn gwlad ehangach. Gallwn ni i gyd fwynhau'r lleoliadau arbennig yma - byd natur ar stepen eich drws.
Os ydych chi eisiau cymryd rhan, anfonwch e-bost at: biodiversity@rctcbc.gov.uk neu fwrw golwg ar: www.rctlnp.wixsite.com/rct-actionfornature
Cyllid Lleuedd Lleol ar gyfer Natur gan Lywodraeth Cymru ar gyfer Prosiect Tirwedd Ffioamrywiol RhCT: Byd Natur ar Stepen eich Drws

Living Landscapes is a network of sites managed for wildlife. These important areas are nature hotspots and connected stepping stones in the wider countryside. We can all enjoy these special places – nature on your doorstep.
If you would like to get involved, please contact us via: biodiversity@rctcbc.gov.uk
Or visit: www.rctlnp.wixsite.com/rct-actionfornature
Local Places for Nature Funding from Welsh Government for 'RCT Biodiverse Landscape Project: Nature on Your Doorstep'



This page is intentionally left blank



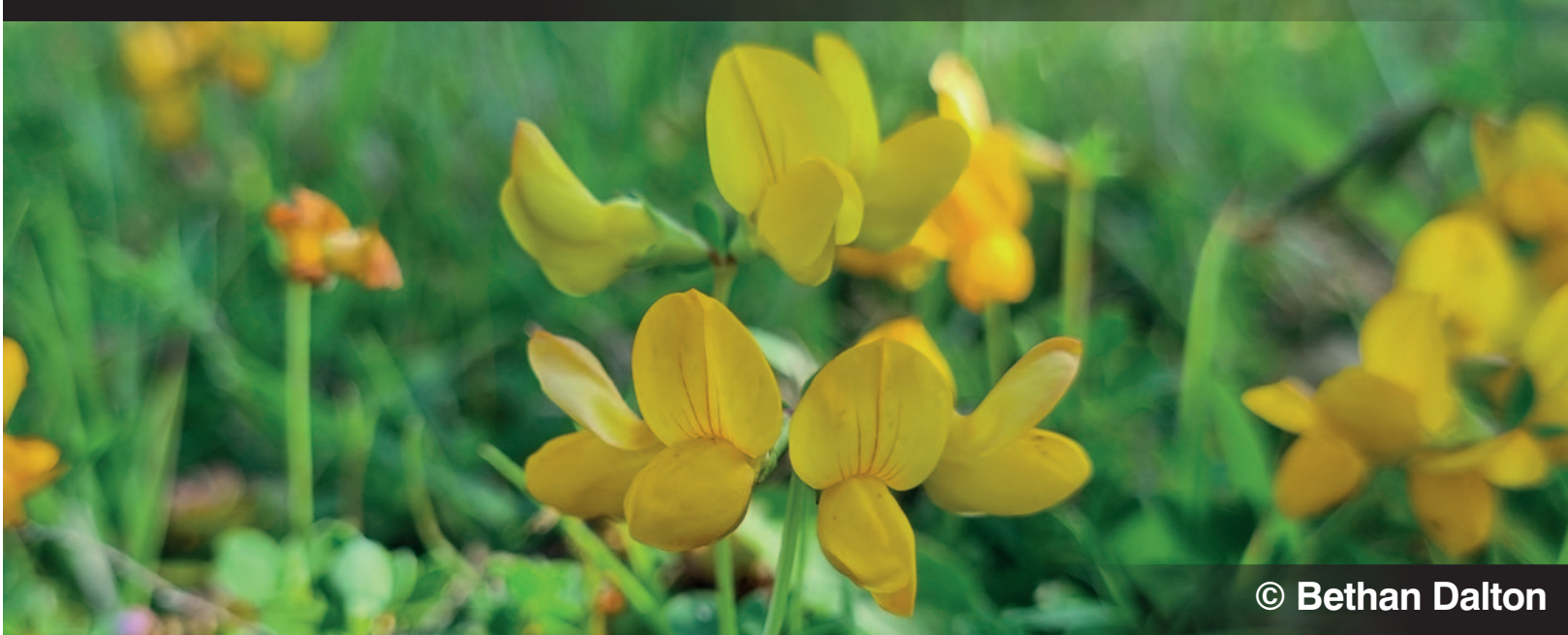
CROESO I | WELCOME TO

MYNWENT ABERDÂR

Rhan o Brosiect Tirwedd Fyw RhCT | Part of the RCT Living Landscape Project

RYDYN NI'N BYW YMA... ALLWCH CHI EIN GWELD NI?

Blodyn Bacwn ac Wy • Common Bird's-Foot Trefoil



© Bethan Dalton

Aderyn Corff • Barn Owl



© Wayne Withers

Cap Cwyr Duol • Blackening Waxcap



© Bethan Dalton

Tamaid y Cythraul • Devil's-Bit Scabious



© Bethan Dalton

Gwraiddiriog Mawr • Greater Burnet



© Sue Westwood

Coch y Berllan • Bullfinch



© Wayne Withers

Gwas Neidr y De • Southern Hawker



© Wayne Withers

Tegeirian Cors y De • Southern Marsh Orchid



© Wayne Withers

WE LIVE HERE... CAN YOU SPOT US?

Cynefin

Mae'r fynwent yn laswelltir hynafol sy'n llawn blodau a chors sy'n cael ei gynnal trwy ddull torri a chasglu gwair. Rydyn ni'n gadael i'r glaswelltir flodeuo a hadu cyn torri a chasglu'r glaswellt. Dyma'r gyfrinach i gynnal ac annog blodau gwyllt.

Pryd i Ymweld

Mae'r glaswelltir yn llawn blodau o'r gwanwyn i'r hydref. Mwynhewch liwiau melyn y blodau bacwn ac wy, porffor y pengaled du, bwrgwyn y gwraiddiriog mawrm, pinc carpiog y gors, lliw hufen barf y bwch a gwyn briwydd y gors ymysg y gwair a'r brwyn. Daw ddiwedd yr haf â blodau porffor tamaid y cythraul a'r hydref â choch, oren a melyn y ffwng cap cwyr.

Bioamrywiaeth

Yma byddwch chi'n dod o hyd i degeiriannau brith cyffredin a chors y de, gwyfynod bwrned pum smotyn ymyl gul, gweision neidr llachar, a glôynnod bach y waun, iâr fach y glaw a britheg y gors (os ydych chi'n lwcus!). Mae cochiaid y berllan a llinosiaid yn bwydo ar hadau'r blodau gwyllt. Gydâ'r nos mae ystumod yn hela, malwod a gwliothod yn denu draenogod ac adar corff yn hela llygod.

Habitat

The cemetery is home to this wonderful area of flower-rich ancient grassland and marshy (rhos) pasture, looked after by 'cut and collect' hay management. All summer the grassland is left to flower and seed before the hay is cut and removed. This is the secret to conserving and encouraging wildflowers.

When to Visit

From spring through to early autumn, the grassland blooms with flowers. Amongst the grasses and rushes, enjoy the yellow of greater and common bird's-foot trefoil, purple black knapweed, the burgundy of greater burnet, pink ragged robin, the cream of meadowsweet and delicate white flowers of marsh bedstraw. Late summer brings a blue-purple haze of devil's-bit scabious flowers and in autumn, the reds, oranges and yellows of waxcap fungi.

Biodiversity

Here you'll find common spotted and southern marsh orchids, narrow-bordered five-spot burnet moths, southern hawker dragonflies, small heath, ringlet and, if you're lucky, marsh fritillary butterflies. Bullfinches and linnets feed on the abundance of wildflower seeds. At dusk bats forage, slugs and snails attract hedgehogs and barn owls hunt voles in the twilight.

Glôyn Bach y Waun • Small Heath | © Peter Eeles - Butterfly Conservation



Mae Tirweddau Byw yn rhwydwaith o safleoedd sy'n cael eu rheoli er budd byd natur. Mae'r ardaloedd pwysig yma'n llawn bywyd gwyllt ac yn cysylltu ein cymunedau â chefn gwlad ehangach. Gallwn ni i gyd fwynhau'r lleoliadau arbennig yma - byd natur ar stepen eich drws.

Os ydych chi eisiau cymryd rhan, anfonwch e-bost at: biodiversity@rctcbc.gov.uk neu fwrw golwg ar: www.rctlnp.wixsite.com/rct-actionfornature

Cyllid Lleuedd Lleol ar gyfer Natur gan Lywodraeth Cymru ar gyfer Prosiect Tirwedd Ffioamrywiol RhCT: Byd Natur ar Stepen eich Drws

Living Landscapes is a network of sites managed for wildlife.

These important areas are nature hotspots and connected stepping stones in the wider countryside. We can all enjoy these special places - nature on your doorstep.

If you would like to get involved, please contact us via: biodiversity@rctcbc.gov.uk Or visit: www.rctlnp.wixsite.com/rct-actionfornature

Local Places for Nature Funding from Welsh Government for 'RCT Biodiverse Landscape Project: Nature on Your Doorstep'



This page is intentionally left blank